



**PERFECT  
FILTRATION**  
SYSTEMS

# ULTIMATE

## STATIONARY RECIRCULATING SYSTEMS

The stationary recirculating filtration systems are designed to remove 99.9% of the water and the majority of solid contaminants including: dust, dirt, metal, and other solids. Systems use centrifugal force and absorption to remove contaminants. All models come complete with housing(s), filter element(s), gauge, water sight glasses, pump, and motor.



Model 3075-8-2 specifically designed to filter hydraulic fluid.

### PRODUCT FEATURES AND BENEFITS:

- \* Removes 99.9% of the water
- \* Removes the majority of the solids
- \* Longer fluid and filter life
- \* Depth-type filter element
- \* Long depth-type filter life
- \* Filters most fluids cleaner than new
- \* U.S. Patent #5871850
- \* Fluid could last years not months
- \* Cooler running systems
- \* Longer machine life
- \* Less component wear
- \* Run continuously or intermittent
- \* Vital Protection for Machines
- \* Quick return on your investment
- \* Easy installation & filter servicing
- \* Less downtime
- \* Ultra clean fluid all the time
- \* Meets OEM cleanliness standards
- \* Used by the US Navy and OEM'S
- \* Patented proven product
- \* Water and particle protection
- \* Gauge and water sight glasses

### How do the recirculating systems work?

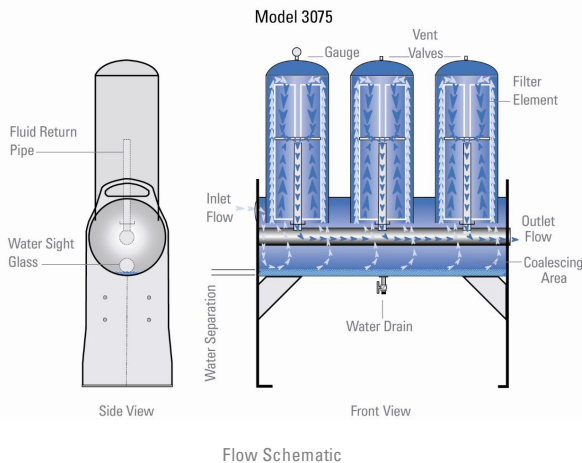
The systems use both centrifugal force as well as absorption to remove the water and solid contaminants from the fluid. The fluid is drawn out of the tank by the pump and enters the filtration housing. The fluid immediately changes direction in a downward motion, the centrifugal force causes the heavier free water molecules to separate from the fluid and can be viewed through a sight glass and drained off when necessary. The fluid then flows up into one of the filter chambers where the fluid is filtered through a depth-type filter media designed to remove 8-10 pounds of solids. If there is any free water still present in the fluid the filter element will absorb up to 1 gallon of water before servicing is needed. Once the fluid is filtered it is returned back into the tank. The depth-type filters are available in 3-micron absolute to 15-micron absolute size ranges depending upon the type of fluid you are filtering.

### What types of fluids can you filter?

We have a wide range of filters and filter media to accommodate just about any fuel, oil, or lubricating fluid. We filter a lot of diesel fuel, hydraulic fluids, gear oils, cutting fluids, and transmission fluids. Consult PFS for pump sizing and element specifications.

### What type of system options are available?

A bag filter housing is available to act as a prefilter to help protect the pump against wear and extend the life of the depth-type filter. Systems can be provided with a Smart Box Control to completely operate and control the motor, manual on / off switch, timers, water sensors, and pressure sensors are also available.



Depth-type filter element designed to hold 8-10 pounds of solids and absorb up to 1 gallon of water each. These filters will last many times longer than conventional pleated paper filters and they are much more efficient.



Vital Protection for Machines Since 1981

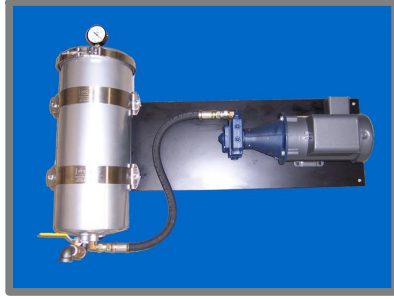


**PERFECT  
FILTRATION**  
SYSTEMS

**OUR PRODUCTS ARE USED BY AND RECOMMENDED BY SOME OEM MANUFACTURERS**



Model 8000F-3-1-FM  
Floor mount system



Model 8000-F-2-WM. Wall mount system



Model 1075-3-2



Model 2075-5-2



Model 3075-8-2



Model 4075-10-2



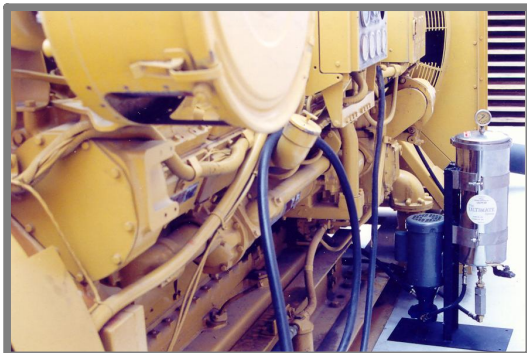
Model 5075-15-2

**Hydraulic fluids filter #7534  
Transmission fluid filter #7534  
Transformer oils filter #7534  
Turbine Oil filter #7534**

**Diesel fuel filter #3914  
Bio-diesel filter #3914  
Vegetable Oil filter #3914  
Cooking Oil filter #3914**

**Lube oil to SAE 80 filter #7544  
Lube oil to SAE 140 filter #7546  
Gear oil filter #7548  
Water based fluids #3727**

For other types fluids and systems consult PFS



System filtering diesel fuel  
for a stand-by generator



**PERFECT  
FILTRATION**  
SYSTEMS



*“Fluid Handling Specialists”*

**D.J. Shubeck Company**

**3111 Stage Post Dr., Suite 101; Bartlett, TN 38133**

**Phone: 901-372-2400 Fax: 901-372-4777**

**Email: steveschneider@djshubeck.com**



**Ultra clean water free fluid 100% of the time**